



THE FLATWHEEL

JULY 2021

VOLUME 56 NUMBER 7



Marc Lingenfelter 2021

RailPictures.Net - Image Copyright CR6377

In This Issue

JULY 2021

FEATURES:

- 13 THE B&O WEST 3rd ROUND HOUSE—Part 3**
By Joe Kurilec, MMR
- 22 HURON RIVER IDEAS**
Bruce Bowie

COLUMNS:

- 2** Table of Contents
- 3** When and Where We Meet
- 4** From The Super
- 5** DIV-4 Leadership
- 6** General Meeting Minutes
- 8** Contest Award Winners
- 10** Module Group
- 11** Contest Table
- 12** Raffle
- 12** Editorial
- 25** What's Going On?
- 26** Hobby Sources Listings
- 29** About US

DIVISION 4

THE NORTH COAST DIVISION

OUR NEXT REGULAR MEETING WILL BE FRIDAY, September 10, 2021



WHEN & WHERE WE MEET

The North Coast Division holds 10 meetings a year (none in July and August). Meetings are on the 2nd Friday of each month. A social half hour starts at 7:00 p.m.

followed by a short business meeting at 7:30. After a short break, a railroad themed raffle and clinic complete the typical agenda. Starting September, 2020, the meetings are held at the **Westlake City Recreation Center**, 28955 Hilliard Blvd, Westlake, OH 44145. Visitors are welcome to attend any meeting.

The Division's newsletter, *The Flatwheel* is published monthly (except during July and August) by Division 4 of the Mid-Central Region (MCR) of the National Model Railroad Association (NMRA). All comments are welcome.

Views expressed in *The Flatwheel* do not necessarily reflect the opinion of the NMRA, MCR, or Division 4.

The Flatwheel is typically electronically published no later than the Monday preceding the monthly meeting. Submissions are due no later than the 26th of the prior month, for example, August 26th for the September *Flatwheel*.

Unaccredited photos courtesy of the editor or staff photographer Dave Williams.

Westlake City Recreation Center
28955 Hilliard Blvd
Westlake, OH 44145



FROM THE SUPER

“Driving the train doesn’t set its course. The real job is laying the track.” Ed Catmull

Well you are probably thinking why am I receiving a July edition of the Flatwheel. Chuck had approached me last month and said he has plenty of articles to publish about various subjects and he would like to put together a Flatwheel for July and August. I had no issues about it and told him to head down that track. So, here we are.

Usually model railroaders put their projects aside and migrate to the great outdoors for the summer. I am guilty of this one, but I still manage to head to the basement and tinker with my trains on occasion. And when it gets unbearably hot, I head back to the basement to cool off. In the meantime, get outside and visit that prototype you have wanted to go see, especially since the bug has backed off and restrictions has eased. But don’t worry the cold weather will be back before you know it.

As a reminder, our Division Picnic is July 24th at the North East Ohio Live Steamers (NEOLS) in Lester. As with our past division picnics at NEOLS, trains start running at 11. Burgers, Dogs and Brats, provided by the Division, will be served at 12. Please bring a dish to share. And we could always use tables and bring your favorite chair to sit out under the trees while not riding trains. I have mentioned before that if you know of another place we could hold our picnic, please talk to me or send me an email. It would be nice to rotate around to different locations.

As a gentle reminder, be sure to sign up to help at the Great Berea Train Show in October. There are a variety of jobs to fill. You can always sign up to work at the gate if you don’t want to lug tables and chairs around. There is something for everyone to do. This is our one big project of the year, so please step up and volunteer.

If you come across someone who is interested in model railroading during our summer off invite them to a meeting. See everyone in July at the picnic.

As always, Model Railroading is Fun !!!

Lee Sheffield

I found this funny quote the other day on the Internet,

“On which side of the platform is my train?” asked a stranger in a Jersey City depot the other day. “Well, my friend,” replied a gentleman, passing, “if you take the left you’ll be right; if you take the right you’ll be left.” — Weekly Mountaineer, The Dales, Oregon, January 6, 1877



Lee Sheffield

NORTH COAST OHIO

DIV-4 Leadership

ELECTED OFFICERS

Superintendent - **Lee Sheffield**, lakeshorenyc@yahoo.com

Assistant Superintendent - **Ron Morgan**, ronalco844@gmail.com

Secretary - **Chris Shick**, craftqween@sbcglobal.net

Treasurer - **Greg Noeth** (216)-789-2086, ginoeth@yahoo.com

Director East - **Fred Obreza** (216)-587-4419, chevy5664@sbcglobal.net

Director West - **Gary Schaefer**, trains.ohio@yahoo.com

Director Quad Co. - **Fred Wagner** (419)-908-8251, boonedog0219@gmail.com

Director at Large - **Brian Haas**, haasland@msn.com

Director at Large - **Jeff Lauren** (216)-798-1896, jflrn@sbcglobal.net

APPOINTED POSITIONS

Great Berea Train Show - **David James**, c(440)-785-9907

Achievement - **John Hemsath** MMR® hemsathj@gmail.com

Layout Tours - **Ron Morgan**, ronalco844@gmail.com

Contests - **Joe Filipiak**, graftonpotter@frontier.com

Historian/Archivist - **Frank Bongiovanni**

Raffle - **Adam Woodie**, woo3482@hotmail.com

Co. Store Manager - **Scott Benson**, sbenson440@zoominternet.net

Clinics - **Gary Sole** 440-250-2192 gsantafe7@gmail.com

Flatwheel Editor - **Chuck Shick**, chuck.shick@hotmail.com

Membership - **George Keller** c(419)-217-0396, gkeller@woh.rr.com

Modules - **Adam Woodie**, woo3482@hotmail.com

N.O.A.R.S. Representative - **Bill Kovacs**

Webmaster - **Ben Lanza**, blqt@nls.net

Refreshments - **Don Glass**

Training Day - **Gary Schaefer**, trains.ohio@yahoo.com

GENERAL MEETING MINUTES

Minutes for NMRA MCR Division 4 General Meeting
Westlake Recreation Center, Westlake, Ohio

11 June 2021

The meeting was called to order by Superintendent Lee Sheffield. Lee held a brief review of the May meeting's auction, noting that it was the first auction in the new facility, with minor changes indicated for next time. The membership provided generally positive comments. Lee then asked for corrections or changes to the May Minutes; hearing none, Lee declared the Minutes to be approved.

Treasurer Greg Noeth was unable to attend the meeting but had earlier provided Lee with a financial report which Lee presented to the membership.

Great Berea Train Show Chair David James was not in attendance. Lee provided a brief status report on the show's progress. There will be no ticket sales at the back gate but that gate will be open and staffed by us for use by vendors, volunteers and guests returning from the restrooms.

Clinic Chair Gary Sole talked about *Railroad Heritage* as an important recipient of photographs (see <https://railphoto-art.org/journal/>). He then asked if the membership would be interested in seeing clinics on Zoom by presenters outside of the Division. Receiving a positive response, Gary said that he would see what was available for next season. Gary stated that the evening's clinic would be provided by George Keller (on lift bridge electrical contact using pogo pins).

Module Group Chair Adam Woodie said that modules would be on display at both the Cuyahoga County Fair and Oktoberfest. Volunteers will be needed at both events, especially the week long fair.

Lee said the Flatwheel deadline is June 26 and that the Flatwheel will be published in both July and August.

Contest Chair Joe Filipiak announced the winners of the April contest and gave each winner a chance to describe their entries. Joe then awarded plaques and gift certificates to winners for the season. Joe concluded with contest categories for next season (September 2021 – June 2022).

Company Store Chair Scott Benson gave a summary of items available for purchase.

Raffle Chair Adam Woodie described the evening's prizes.

Joe Kurilec MMR™ was thanked for his work on the virtual raffle, which he stated was fairly well completed by this point.

Picnic Chair Larry Kuczynski reported that the picnic would be hosted by the Northeast Ohio Live Steamers (in Lester, near Medina) on July 24th between 11 and 3. He asked that everyone remember to bring a side dish and also sign up tonight so that he'd have some idea of how much food to bring. Bringing lawn chairs was also suggested.

GENERAL MEETING MINUTES

Layout Tour Chair Ron Morgan said that tours would be scheduled for November.

Chuck Klein spoke about the upcoming *Nickel Plate Historical & Technical Society's* annual convention in Lebanon Ohio in October, saying that members of other railroad societies were being invited.

Lee talked about his recent trip to Colorado.

Ram Shearer said that Ormandy's Hobby Shop in Medina was relocating to a facility about 18 miles further west.

It was announced that Division 6 will be holding its meeting at the Marion Union Station in Marion Ohio next weekend. It's an all-day event with numerous clinics along with plenty of train watching.

The meeting was adjourned at 8:28 pm.

David M. Williams

Filling in for Chris Shick, Secretary

AWARDS NIGHT RECAP



First Place Diorama—John Witt

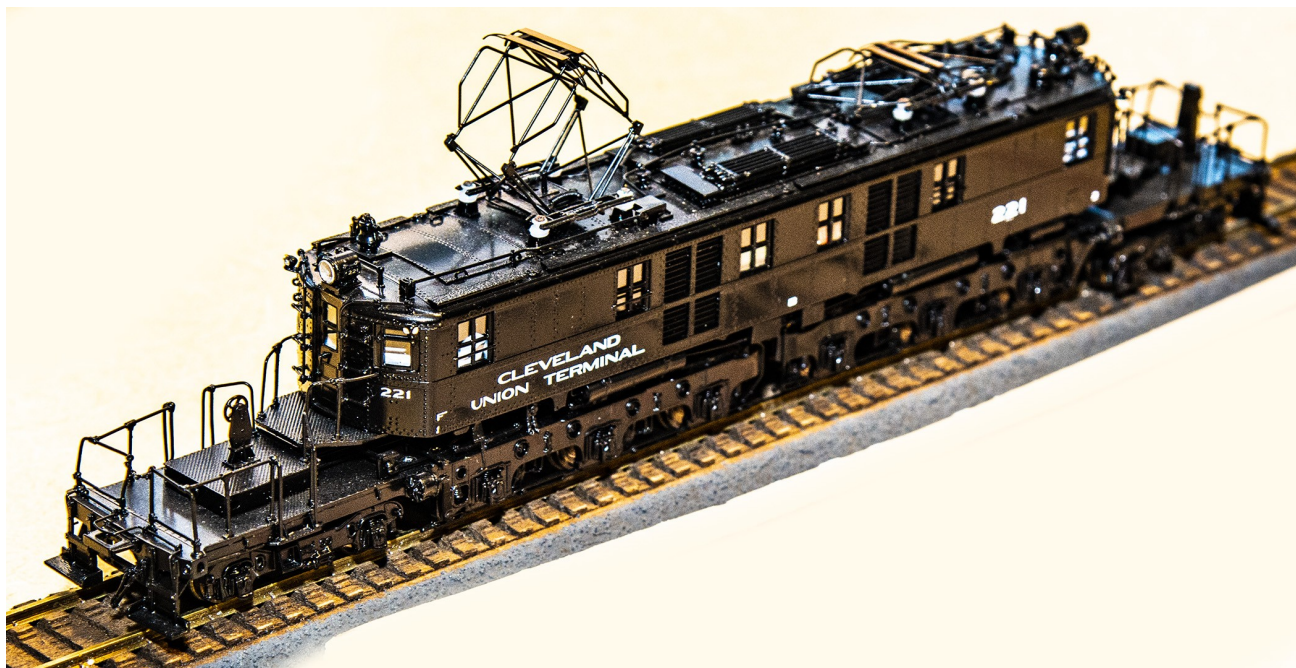


2nd Place Diorama-Fred Wagner

3rd Place Diorama-George Keller



AWARDS NIGHT PICTURES



First Place Model-Chuck Klein



Second Place Model-Brian Haas



AWARDS NIGHT PICTURES



3rd Place Model Tie— Dave Flebbe & Don Glass



MODULE GROUP

Greetings Fellow Model Railroaders!

Upcoming events continue to take shape for the Module Group. First up, the Cuyahoga County Fair. The County Fair Board is ecstatic about having the module group display at 2021 Cuyahoga County Fair. This event is scheduled to begin on August 10th and run through August 15th. Currently, the module group is formulating a proposed layout and assembling a schedule to operate on the layout.

Next up, is the Cleveland Oktoberfest. The module group has seen some positive movement regarding displaying at this event. Nothing concrete has been worked out at this point. However, the module group expects that a display will be welcome edition to this event as requested in 2019. This event is scheduled for two weekends in September. The first weekend will begin on Friday, September 3rd and end on Monday, September 6th while the second weekend will begin on Friday, September 10th and end on September 12th. Currently, the module group plans to set up on the first weekend at this time. More information regarding this event will be sent out at a later date.

In summary, mark your calendars for those upcoming events. If you are interested in joining the module group and operate a train or two on the layout, then please don't hesitate to let me know. There will be plenty of opportunities over the next couple of events for anyone that would like to try their hand at module model railroading. Please email me at woo3482@hotmail.com and let me know if your are interested.

Until next time!

Adam "Hot Box" Woodie



Adam "Hot Box" Woodie

CONTEST TABLE

The Model Contests for 2020 - 2021 were without a doubt, one of the strangest ever. Meetings were cancelled, zoom meetings happened, and when we came back, it was all about masks and distancing. We not only survived but we had over twenty members participate in one or more of the model contests. A huge thank you to all who entered the contests and to those who voted for their favorites in the contests. Points are awarded to those who submit an entry for each contest. One point for simply just entering an item in the contest. Two points for third place, three points for second place, and four points for a first place. Points are totaled up for each participant at the end of the season and awards are given to those with the most points. The 2020 -2021 season results had Chuck Klein in first place for models, Brian Haas won second place, and a tie for third place had Don Glass and Dave Flebbe as winners. The diorama first place was earned by John Witt, second place went to Fred Wagner, and third place to George Keller. Thanks again gentlemen for sharing your modeling skills with all of us.

The new list of contest challenges for 2021 - 2022 season are as follows; September asks for an interesting tank car from the era you are modeling or simply a tank car you find interesting. October contest is looking for a small steam powered switch engine. The type you would find in freight yards or industries but not on the head end of a fast freight on the main line. November's contest subject matter is about something that all railroads have and still do use today for traction. Sand facilities are always found around engine service areas, whether it's old time steam or today's diesels. Getting traction on slippery rails is made possible with sand. So let's see what you come up with as a sanding facility. January will give you a chance to build a small, rural railroad station. Depending on the railroad and its location, the designs can be unique and varied.

February's contest is asking for an R.P.O. (railroad post office) car. March is the "blank box car contest. Blank box car bodies will be available at all the meetings at the Contest Table. You can have as many as you need at no cost to complete your model project. April's contest is a grain hauling car. Forty foot box cars were the standard until covered hoppers came along. May's contest is challenging you to show a piece of logging industry equipment that needs rail to move on, other than a locomotive. Well, there you have the list of next seasons contests. I hope you have fun with them



Joe Filipiak

RAFFLE

Monthly Raffle

Greetings Fellow Model Railroaders!

No monthly raffle for the month of July or August since there are no scheduled meetings. The raffle will resume at the September meeting.

Until next time!

Adam "Hot Box" Woodie



Adam "Hot Box" Woodie

EDITOR

Well, this is the first time for a July & August Flatwheel.

I hope you enjoy seeing these summer issues.

Please Note:

I have changed my email address. If you have my address in your contacts, please update my email as follows:

chuck.shick@hotmail.com

I still have the sbcglobal address, but it doesn't always work correctly.



Chuck Shick, Flatwheel Editor

THE B&O WEST 3rd ROUND HOUSE—Part 3

By Joe Kurilec, MMR

THE B&O WEST 3rd ROUND HOUSE, CLEVELAND, OHIO FOLLOWING THE LINE WEST OUT OF THE FLATS.

PART 3

By Joe Kurilec, MMR

More information can be found in The Sentinel Second Quarter 2014 issue in the well-written article "The B&O in Cleveland" by Bill Cramer, Mike Lytle and Ron Spiga. All issues of the Sentinel can be purchased on 3 CDs from the B&O Historical Society Company Store. <http://borhs.org/> Look for the link "Videos and other digital Media."



Looking back at the car storage area from the front of the round house, we see more of the MWPS collection. The string of four passenger cars, center right, is the approximate site of the large wooden coaling ramp taken in 2000.

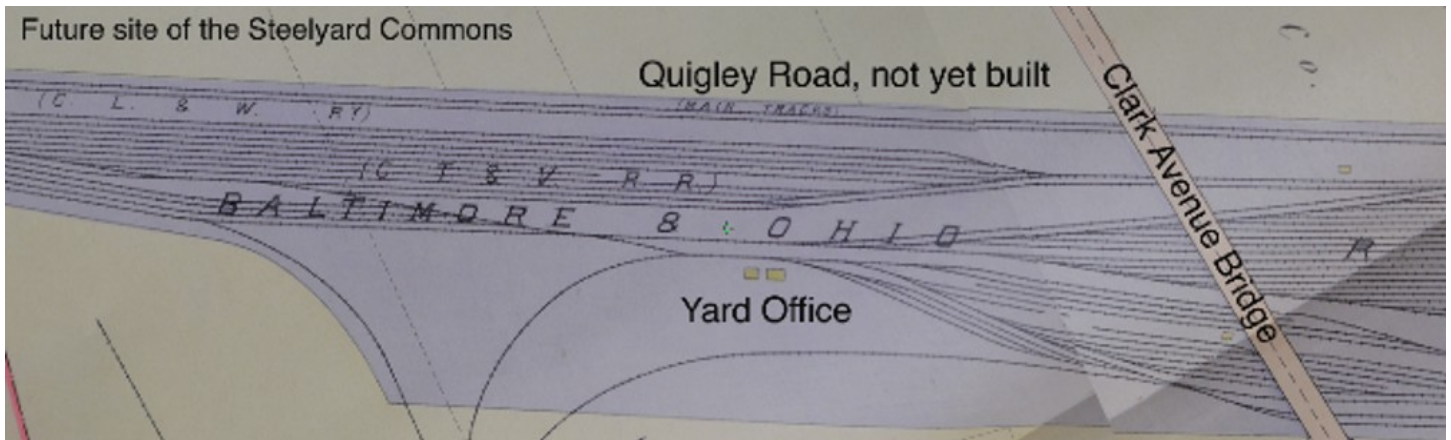
THE B&O WEST 3rd ROUND HOUSE—Part 3



Image, Barnard Collection, B&O Historical Society

This image taken from the Winter/Spring 1997 issue of *The Sentinel* shows what was left of the coaling ramp. It was built around in 1914 and was a massive structure. By 1966 only a small portion was left as a sanding facility. I built a HO scale model of the remaining structure that won first place in a Mid Central Region, National Model Railroad Association convention. I had many pictures of the structure and had a complete set of measurements that were turned into a scale drawing for an article that I hoped to write years ago. The model, photos and drawings were donated to the MRPS West 3rd Clark Avenue Roundhouse. A recent trip to the roundhouse with the blessing of the crews gave me full access to all archives and we still could not locate what was a wealth of information!

THE B&O WEST 3rd ROUND HOUSE—Part 3



As we leave the round house grounds turning north from the West 3rd Street Roundhouse, going a few 100 feet, turning southwest on Quigley Road, passing the B&O yard and CL&W main line will be on the left. I "stitched" two Plat maps to make this image of the Clark Avenue yard in 1912. In this 1912 Plat map, Quigley Road has not yet been built along the top area of this map. Today Jennings Road meets with Quigley Road and is divided by the Steel Yard Commons shopping area. The Clark Avenue Bridge is seen to the right going over the yards. To the left of the bridge, located in the center of the yards was the Clark Avenue yard office.

THE B&O WEST 3rd ROUND HOUSE—Part 3



Image, Barnard Collection, B&O Railroad Historical Society

With the old Clark Avenue Bridge in the background notice the concrete footers for the bridge to the right of the 1960s yard office. This bridge was a great place to view the yards and the steel mills "close up". Night views of the steel mills were especially interesting from this bridge.

THE B&O WEST 3rd ROUND HOUSE—Part 3



Taken in 2018 from Quigley Road shows the yard office as it stands today. The basic shape of the office is still intact. To the right of the smaller, lower office you'll see several of the Clark Avenue bridge footers that still remain. These can be seen supporting the Clark Avenue Bridge in the 1960 view of the yard office. Two more footers are at the edge of Quigley Road to the left of this image, out of view.

THE B&O WEST 3rd ROUND HOUSE—Part 3

Following the tracks south of the Clark Avenue yard office, Quigley/Jennings Road is to the right in this image out of view. The bridge in the distance is the “new” Harvard-Denison Bridge. The photo on the left, taken from a CXS loco cab in May 1988. The photo on the right was taken in 2018. Notice that much of the track work such as the crossing has been removed. In both images you’ll see a tilting target signal marked by arrows. The insert at the top right shows a close up of the signal.

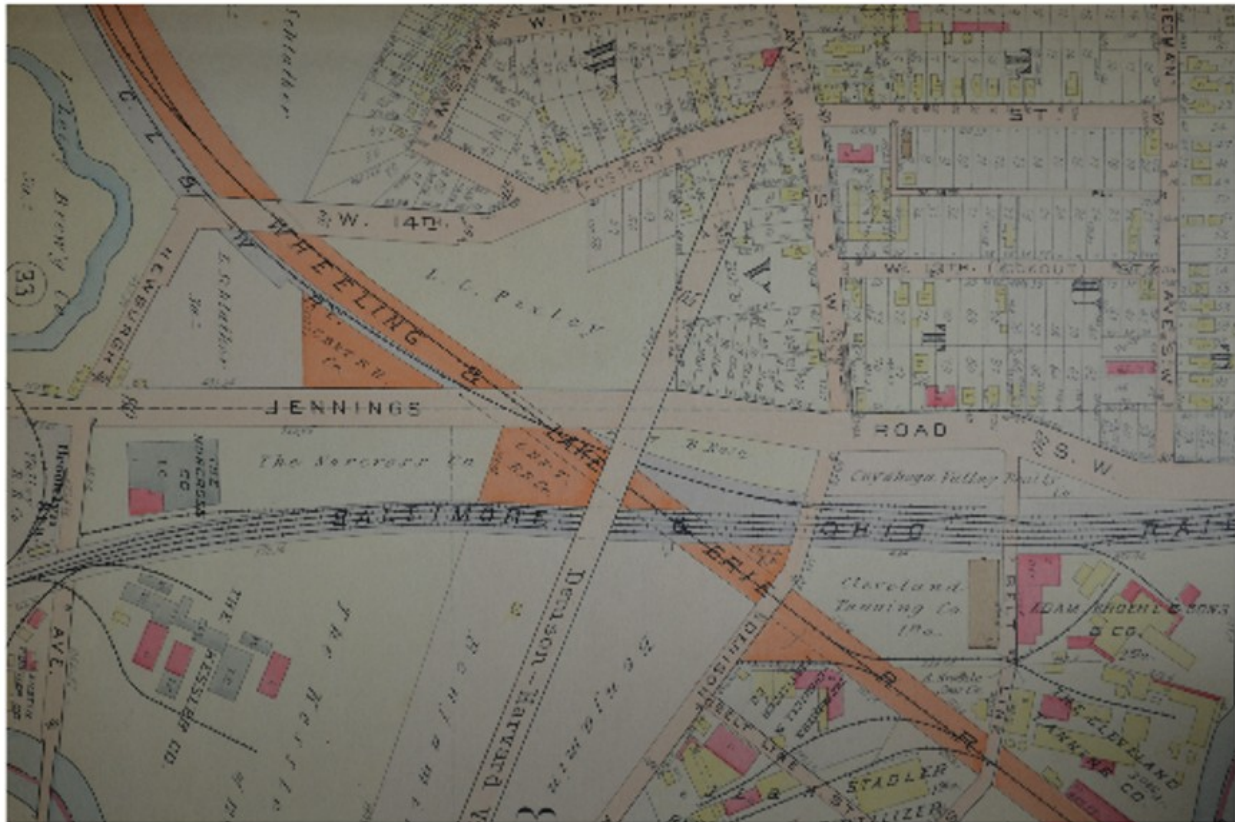
Left image Ron Spiga. Right image and insert Joe Kurilec

THE B&O WEST 3rd ROUND HOUSE—Part 3



The tilting target signal, taken “streetside” in 2018. The area behind me is now Steel Yard Commons shopping mall. Jennings Road now starts here. When I found this signal I was positive it was an old semaphore. Ron Spiga quickly put me in place telling me the correct name of the signal. A tilting target signal. Notice the large mountain of slag from Arcelor Mittal’s steel mill. In the 1950s & 60’s it was J&L Steel and in 1984 the company was LTV Steel. The Willard Ohio Museum has an outdoor display of this signal.

THE B&O WEST 3rd ROUND HOUSE—Part 3



THE B&O WEST 3rd ROUND HOUSE—Part 3

In part four, my research of the B&O Brooklyn station that was at Harvard Road and Jennings Road, centerleft on the 1912 map. I learned that the small station that was there in 1966 is still around in 2018.....only now it resides in Berea, Ohio!

Before moving further south on our way towards Strongsville, Ohio we will take a look around the Beltline Street area. This 1912 Plat map shows our stopping point to the far right just before Beltline Street. Part Four will pickup from where RD Tower once stood. Left of Beltline Street and move to where the B&O/CT&V crosses the W&LE as it heads out of the flats area. The B&O/CT&V tracks head to the lower left on the map, southeast and on to Akron, Ohio. The B&O tracks also head southwest next to the W&LE tracks, middle left.

CREDITS and ACKNOWLEDGMENTS.

All photos by Joe Kurilec, MMR unless otherwise noted.

Plat map books provided by State Tool & Die, Emil Orenick, President and CEO.

B&O Historical Society.

Barnard Collection, B&O Historical Society

The Berea Historical Society.

The Brooklyn, Ohio Historical Society.

The Strongsville Historical Society.

The Sentinel

Midwest Railroad Preservation Society, West 3rd Street Roundhouse, Clark Avenue Yards.

Steve Korpos Board of Director member and Supervisor of Roundhouse Operations.

Case Western Reserve University Encyclopedia of Cleveland History (case.edu/ech/) Online research.

Wikipedia. Online research.

Bill Cramer for guidance and direction.

Ron Spiga as my historical compass.

Thanks for reading. Comments are always welcome.

jkurilec@earthlink.net

HURON RIVER IDEAS

Bruce Bowie

During the past 12 months, I have been placing a great deal of track on my East Broad Top v3.2 layout. This inevitably leads to a good size pile of short pieces, ranging from 1" to maybe 3". I do not like to use them in my trackwork as it leads to too many joints. This can lead to several operating issues as well as not looking genuinely nice.

I was driving on River Road in Huron this morning and saw a great example of how the prototype uses old rail. I thought this would be a great way for us modelers to use those short pieces on our layouts. This would work for any era and locale where an embankment needs reinforcing.

With help from Division member Jeff Gray, a little prototype information follows about this area. The original Norwalk to Huron line was earliest Wheeling and Lake Erie and was 3' narrow gauge and as such had several sharp curves as it followed the Huron River from Norwalk, past Milan to Huron at its north end. The sharp grade climbing out of the Huron River valley (Milan to Norwalk about where Carter Lumber now is located) made it difficult as well. Later, W&LE became standard gauge and extended to Wheeling and somewhat later Norwalk to Toledo was built. The Norwalk to Huron was always a challenge because the alignment was narrow gauge and not well engineered for standard gauge and heavy ore traffic.

After, 1949 the NKP "leased" the W&LE for 999 years. Not too soon thereafter they constructed the tie in line from near the Glidden Paint factory to the NKP mainline. The connection is at the NKP "Shinrock" siding.

When Jeff moved to Norwalk (1976) the line was in place and still used to Milan (a couple little industries and Milan steel). Line rails were in place all the way to Huron (Franklin Flats etc.), but Jeff doesn't believe very many trains went north of Milan.

Thank you Jeff for adding to my prototype knowledge.

Today the W&LE uses the Shinrock connection to service three spurs that lead into the Akzonobel Coatings (formerly Glidden) manufacturing plant. These spurs cross River Road and their construction leads one to wonder what the train crew thinks when using them. However, they are great examples of imperfect prototype track we can use as examples on our less than perfect layout tracks. The track continues north from the paint plant to a small double-ended 9 track yard. The yard is used on an infrequent basis to stage cars for the paint plant. The track then continues north and out onto the area once filled with Hulets and their products. Today only the balloon track remains. About once per year the W&LE has a small freighter pull in alongside the balloon track and unload a large amount of ballast sized stone. A long drag of empty hoppers will arrive, and the stone will be loaded by front loaders. Presumably, the stone is used along the W&LE tracks system wide.

In addition to the tracks described above, there still exists at the yard a non-functioning scale house and at each end tall iron light posts as used many years ago. There are some great modeling ideas in this short stretch and well worth a drive to Huron.

If it is a nice weather you can drive over to the west side of the river and out to the north end for a walk out to the lighthouse and a stop in a couple of nice eateries with riverside patios to enjoy the view while wetting your whistles. Whether the weather is nice or not, you can stop by Berardi's or the Sandbar, both on Huron's eastside for a great locally made meal. Or for a little nicer meal and ambience, check out Marconi's in this same area.

HURON RIVER IDEAS



HURON RIVER IDEAS



WHAT'S GOING ON

2021 - July 8-11



Your **Charity Auction** for Painesville Railroad Museum

On Line Fundraiser Auction

[Flyer](#)

[Auction Link](#)

2021 - July 10

G Scale Flea Market

Warren SCOPE (YMCA)

375 North Park Ave., Warren, Ohio 44481

[Map](#)

[Flyer](#)

[Web Page](#)

2021 - July 11

Hobo Day

Model Train Flea Market



Painesville Railroad Museum (aka NYC Painesville Depot)

475 Railroad Street, Painesville, Ohio 44077

10:00 am to 3:00 pm

Phone: 216-470-5780

Adm. Free

Donations Accepted and Appreciated

[MAP](#)

[Flyer](#)

[WEB Page](#)

2021 -
July 24

Wildwood Train Day

Wildwood Cultural Center

7645 Little Mountain Road, Mentor, Ohio 44060

9 am to 3 pm

Adm. \$2.00

Phone: 440-974-5735

[Map](#)

[Flyer](#)

HOBBY SOURCES IN OUR AREA

State Tool & Die



4780 Briar Road | Cleveland, OH 44135 | T: 216-267-6030



Shop our entire inventory of HO scale cars and accessories at www.statetoolanddie.com

Sounds Of Motion



DCC SALES AND TECHNICAL SUPPORT

6910 SOM Center Rd.
Solon, OH 44139
Phone 440-248-4599

FRANK FEKO
Proprietor
frankfeko@gmail.com



4342 W. 130th Street
Cleveland, Ohio 44135
(216) 252-8880

EASTERN OHIO TRAINS

The Hobby Home of High Speed Service

2740 Fairmount Blvd.
Cleveland Heights, Ohio 44106
Phone: 216-215-7377
Fax: 216-371-0931
email: cohss@aol.com
www.easternohiotrains.com

Baron

Joe Andrews, Proprietor

JASON'S BRASS POLES

We specialize in trolley model products.

Railroad Trolley & Specialty & Model Railroad Dealer

Brian Weisman - Owner

bweisman@roadrunner.com (TROLLEYS & MODEL
RAILROAD DEALER)

<http://www.jasonsbrasspoles.com/>

These vendors are members of our own NORTH COAST DIVISION! Give them a try when you need the supplies and services they offer!! - Editor

HOBBY SOURCES IN OUR AREA

AL'S TRAINS & HOBBY LLC
708 BROADWAY AVE.
BEDFORD, OHIO 44146



DCC INSTALL
FRAME MILLING
TRAIN SETS & ACCESSORIES
MODEL KITS-SLOT CAR SETS
& ACCESSORIES

HOURS:
M-W-F: 10-6
THURS: 10-7
SAT: 10-4
SUN-MON: CLOSED

Phone: 440-232-0591 Fax: 440-232-0596

www.alstrainshobby.com email: al@alstrainshobby.com

Stauffer Books & Prints



www.staufferbooksprints.weebly.com

STAUFER BOOKS & PRINTS

(330) 636-1672

Parma Hobby

5275 Ridge Road
Parma, Ohio 44129

216-741-6440

www.parmahobby.com

MON.-SAT. 10-5
SUN. NOON-5

www.ormandys.com

EXTENDED
HOLIDAY
HOURS



I - HO - Z GAUGES AND PARTS

Ormandy's



TRAINS & TOYS FOR THE CONNOISSEUR
SPECIALIZING IN EUROPEAN TRAINS
BUY & SELL OLD TOYS



JOHN ORMANDY

330-722-1019
330-722-2205 Fax



10 PUBLIC SQUARE
MEDINA, OHIO 44256

Model-Trains

Jan Dell Flowers Train Shop

Lionel - MTH - Marklin - Micro-Trains - Kato - LGB - PIKO - Bway Ltd.

19350 Detroit Road Rocky River OH 44116

440/331-2392

Jim Lewis



Uncle Ray's Trains

4282 Lake Rd. • Sheffield Lake, Ohio 44054



uncle raystrains@gmail.com

Or call Uncle Ray at... (888) 933-2999 • (440) 933-0609

www.uncle raystrainsoh.com

Stewart's Hobbies & Collectors' Toys

Trains • Plastic Kits • Die-Cast Cars
Slot Cars • Toy Soldiers

38033 Euclid Ave. • Willoughby, OH 44094

440/942-6632

STORE
HOURS:
M-F 12-6
THURS. 12-8
SAT. 10-6

ROB STEWART
SANDY STEWART

• Buy •
Sell • Trade
Old & New

Strongsville Hobby



440-366-0665

ELECTRIC & NITRO R/C CARS, BOATS, AIRPLANES, SLOT CARS, ROCKETS
HOBBY SUPPLIES & PINE CAR DERBY, TRAINS & PLASTIC MODELS

831 Chestnut Commons Dr.
Elyria, Ohio 44035
Phone (440) 366-0665
Fax (440) 366-0666

R/C TRACK
ON SITE
www.strongsvillehobby.com

Mon - Fri 11:00 - 8:00
Sat 11:00 - 6:00
Sun 12:00 - 5:00
JERRY IVANCIC

HOBBY SOURCES IN OUR AREA

DANIELS Premium Quality HOBBIES Est. 1978

34E Main Street, Norwalk, OH 44857
M-Sat 10AM-6PM, Closed Sundays
(419)588-2029 | danielshobbies.com

CORNER FIELD



MODEL RAILROAD & HOBBY

16720 Pioneer Road • Middlefield, Ohio 44062
Located in Huntsburg

Tom Elesh, Owner • 440-636-5162

Website: cornerfieldmodelrailroadmuseumandhobby.com
Email: cornerfield@cornerfieldmodelrailroadmuseumandhobby.com

BAD L's Hobby

Your One Stop Slot Car Shop!

13397 Smith Road
Middleburg Heights, OH 44130



440-941-BADL (2235)
info@badlhby.com
<http://badlhby.com>

Bob Lusch
The "B" in BAD

STOCKYARD EXPRESS LLC

O-Gauge MTH Electric Trains & Accessories

Where the bull stays in the barn and the train rolls down the track

- MTH Authorized Service & Demo Center -

MTH - Lionel - Atlas

'O' Trains, track, accessories and more

49293 Plate Rd

Oberlin, OH 44074

(South of Baumhart & SR 20)

Clyde & Diane Lewis

440.774.2131 / 440.774.7575 fax

www.stockyardexpressllc.com

email:stockyardexpress@aol.com



BEN FRANKLIN



Plastic, Wood & Metal Models
Trains • Rockets • Kites • Coin Books
Die Cast • Roadrace • Pine Car Derby
Puzzles • Radio Control • Dime Store

Large Selection
Great Prices
Howard Mowcomber

183 Park Ave.
Amherst, OH 44001
440-988-5462

THE MUSIC BOX

Grand Pacific Junction

8062 Columbia Road

Olmsted Falls, OH 44138

440-235-1625

440-946-5588

themusicbox@prodigy.net

HobbyTown USA®

World's Largest Hobby Store Franchise!

Ray and Janet Grenier
Owners

www.hobbytown.com

Erie Commons
7982 Plaza Blvd.
Mentor, OH 44060
(P) 440.946.5588
(F) 440.974.2119

DOLLS AND MINIS

8068 Columbia Road

Olmsted Falls, OH 44138

440-647-1519

www.dollsandminis.com

HOURS: Tuesday thru Saturday
10AM - 6PM

PLEASE SUPPORT THESE DEALERS!

ABOUT US

We are Division 4 of the Mid-Central Region of the National Model Railroad Association. (DIV-4 MCR NMRA).

With more than 200 members from Cuyahoga, Erie, Huron, Lorain and Medina counties in the state of Ohio.

The North Coast Division meetings are normally held on the second Friday of the month, to hear guest speakers, share skills, have railroad related clinics, and to share common problems and successes. Many of us get together informally in round-robin sessions to operate and work on each other's layouts, or just talk railroads and modeling.

